



**Access  
Able**®

**HangAbles**™

**TOILET**™  
**Base Plate**

**Patch  
Ables**™

**SACHWIN**  
p r o d u c t s



**REVERSABLE**

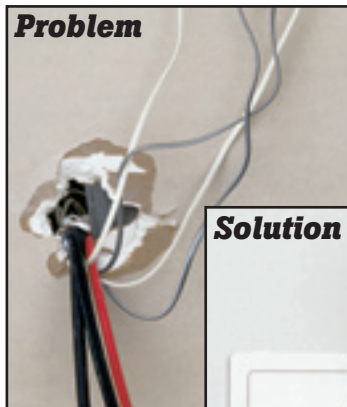
**Access Panel**

- Eliminates Costly Repairs
- Easy Installation
- Non-corrosive

Access Able's reversible, multifunctional access panel boasts an impressive, high performance patented design. Our superior product is produced from precision dies for a perfect fit of lid to frame. Water-tight molded corners ensure maximum protection from the elements. Additionally, our exclusive locking mechanism and reinforced ribs eliminates door sag when used on ceilings and helps prevent small children from exploring dangerous areas.

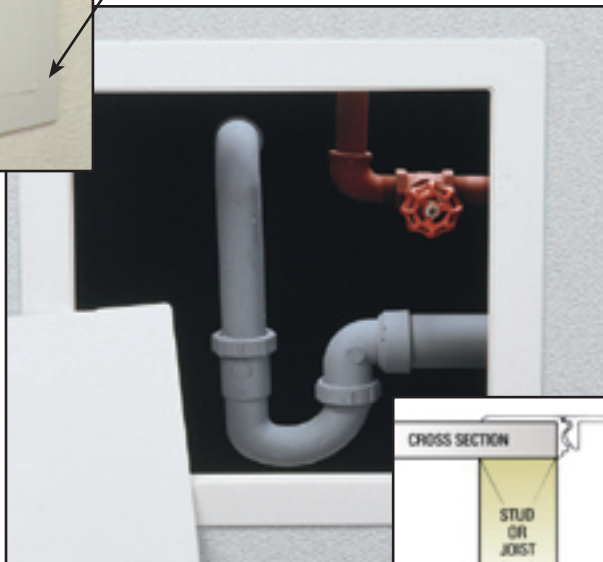
**4"x6" PANEL**

The AP46 Access Panel is the most versatile small access panel used in plumbing, electrical and electronics applications. The door has designated drill points and "knockouts" for easy wiring installation and to avoid confusion with bundle wiring.



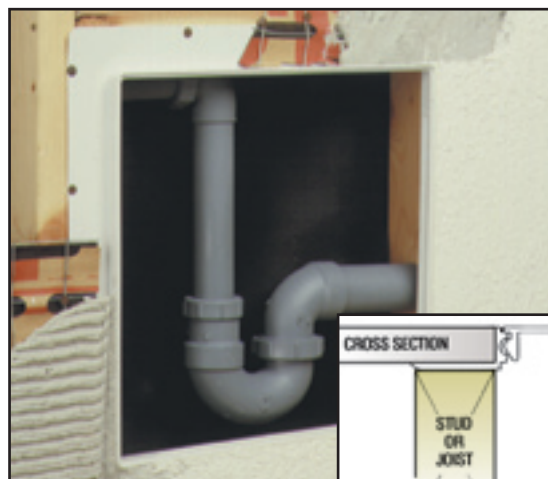
**SURFACE MOUNT PRESS-IN REPLACEMENT**

Replaces old rusted, kinked, missing or destroyed metal access panels. Usually a press-in fit. See #AP1414



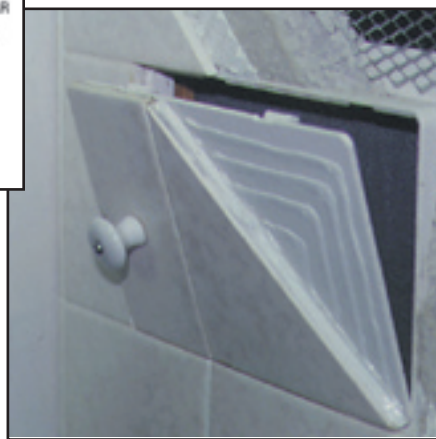
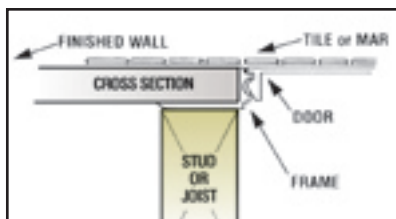
**FLUSH MOUNT**

Mounts to rough framing on new construction. Flanged nailed face down gives guide for plaster, stucco, dry wall and tile build ups.

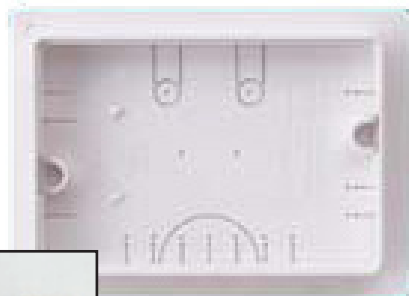


**TILE-ABLE APPLICATION**

- Use flexible adhesive and grout on door
- Adjust frame height to finished wall



Tile-able application



4"x6" Panel

Part No.	Wall Opening	Actual Door Size	Frame Size to Outer Flange
AP46	4 1/4" x 6 1/4"	4" x 6"	5 1/4" x 7 1/4"
AP69	6 3/8" x 9 3/8"	6" x 9"	8 1/4" x 11 1/4"
AP1414	14" x 14"	13 3/4" x 13 3/4"	17" x 17"
AP1429	14" x 29 1/8"	13 3/4" x 29"	17" x 32 1/4"

# HangAbles™

## SELF CENTERING



City of Los Angeles Approved  
Application #M-960114

## Hanger System for DWV Plastic Pipe up to 4"

### Only One Size To Stock

- Universal system fits 2", 3" & 4" diameter Schedule 40 DWV plastic pipe.

### Self Aligning

- Universal self-centering design snug-aligns and secures pipe regardless of diameter, eliminating pipe rattle.

### Non Corrosive

- Prevents electrolysis

### Non-Slip Starter Flutes

- Fluted Hanger-rods provide non-skid recesses for starting nails or screws.

### Saves Money

- Low cost system with unique adjustable strap ratchet makes straps reusable.

### Reduces Work Time

- Adjustable strap ratchet locks and releases for easy adjusting, repair and retro fitting.

### Cost Effective

- A-B hanger-rod cutting system helps utilize material efficiently to reduce waste.

### Extra-Strength

- Virtually indestructible ABS & Nylon parts.

### Maximum Drop Span

- 36" length hanger rods for extra long DWV spans.

### Easy to Work With

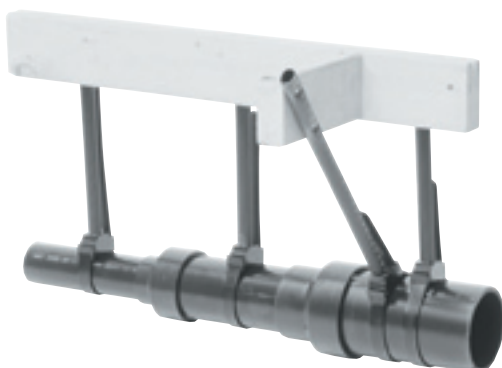
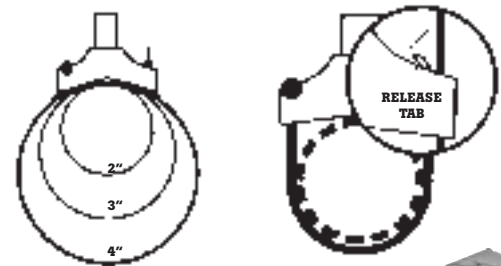
- Simplified screw/nail mounting, easy on/off ratchet strap. Convenient cutting guide.

### Prevents Bowing

- Rigid shaft prevents sagging and bowing. Guarantees the integrity of drain shaft



Part No. HA3600



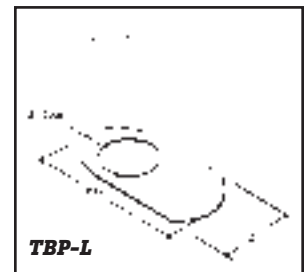
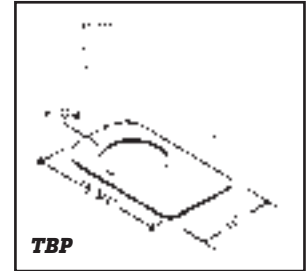
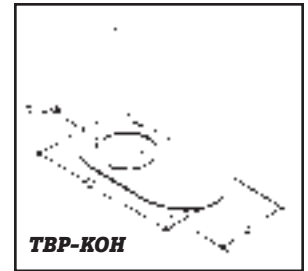
**Seismic Angle Mount**  
Eliminates up, down and side movement.



HangAbles are available in twelve dual-end hanger sets (24 HangAbles) per carton.

Patents pending.

# TOILET™ Base Plate

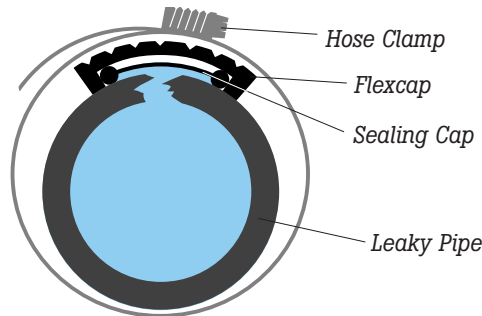


**T**oilet Base Plate is a new, stain concealing system which gives a finished look to your low-flush toilet.

Now you can eliminate the need for costly floor replacements. The plate is non-corrosive, provides a clean, professional look and easily installs.

These toilet base plates may be stacked by using the aligning pegs molded into the plate. By stacking the plates you may overcome the problem of a toilet that rocks on a hub that has been set too high.

Patents pending.



**P**atchAbles is a universal repair system for rigid pipes. It temporarily repairs up to 3/8" diameter punctures, blowouts and corrosive leaks effectively in mid-sections of pipes. The PatchAbles components consists of:

1. a universal Flexcap
2. an elastomeric Sealing Cap and
3. appropriately sized stainless steel hose clamp to match the diameter of the damaged pipe

The PatchAbles system effectively repairs the damaged pipe by sealing off the affected area. The Flexcap/Sealing Cap assembly effectively encapsulates and seals off the leak, with the Sealing Cap membrane ensuring isolation and confinement of the leak. The hose clamp maintains necessary pressure to the assembly to complete the seal until final repairs.

**PA51 KIT** For temporary repairs of 1/2" to 1" rigid pipes. 3/kit 12/carton

**PA154 KIT** For temporary repairs of 1-1/2" to 4" rigid pipes. 3/kit 12/carton



Patents pending.

**SACHWIN**  
products, inc

Available at:

MADE IN THE USA

P.O. Box 1366  
Torrance, CA 90505  
www.sachwin.com

© All Rights Reserved SACHWIN Products, Inc.